

COLLINS TOWNSHIP

Each township has six files containing six sections in each, and one file containing all 36 sections.

Collins01to06.pdf

Collins07to12.pdf

Collins13to18.pdf

Collins19to24.pdf

Collins25to30.pdf

Collins31to36.pdf

CollinsAll36.pdf

The points are listed starting with the point above the SE corner and continuing in a counter-clockwise rotation around the section. This normally begins with the East point, Northeast, then North, but may also include Witness Corners, and/or Meander Corners.

Definitions

Witness Corner: A witness corner “stands in” when the true corner cannot be monumented or occupied because of difficult terrain or obstruction of the corner sight. The witness corner must be on the section line and is usually 5 or 10 chains away from the true corner.

Meander Corner: The intersection of a township, range, or section line and the banks of a navigable stream or meandering body of water.

CERTIFICATE OF LOCATION OF GOVERNMENT CORNER

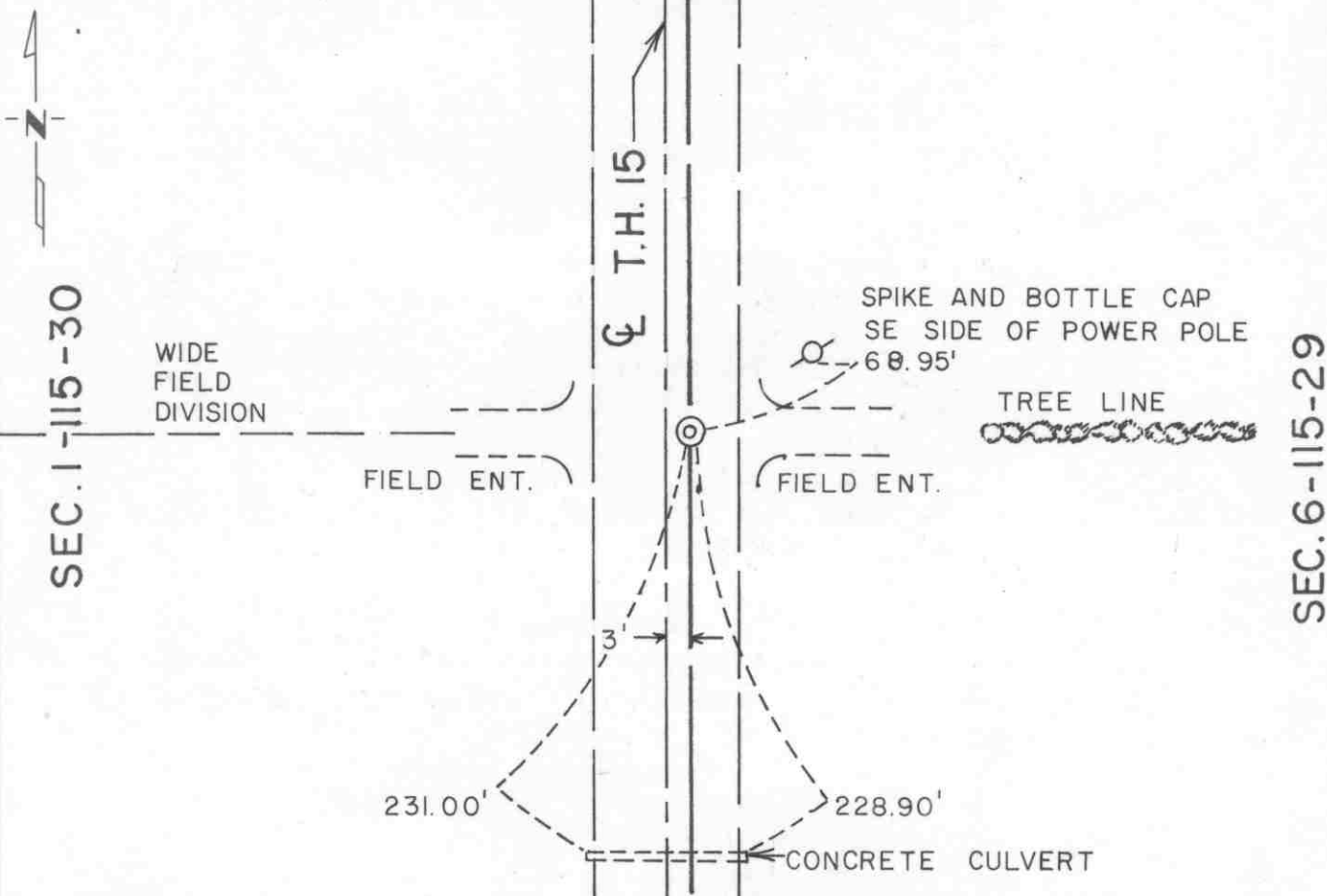
East Quarter _____ Corner of Section 1, Township 115 N, Range 30 W, 5th P.M.

STATE OF MINNESOTA, County of McLeod

At the corner location shown on the sketch:

- On Apr. 13, 1990 found a nail and a disc at the road surface about 3 feet east of the centerline of T.H. 15
- left monument as found, lowered monument, removed monument (explain)
- On _____ placed a _____

SKETCH OF REFERENCE TIES



Statement of evidence relative to this corner location is on back of page.

I hereby certify that this document and the data contained herein was prepared by me or under my direct supervision.

Robert G. Jans
SIGNATURE

8-19-91
DATE

Registration No. 11864

- Land Surveyor, Professional Engineer
- County Surveyor, County Engineer

OFFICE OF THE COUNTY RECORDER

County of McLeod

I hereby certify that this document was filed in the Co. Recorders office at 2 P .M. on the 18th day of Sep A.D., 1991

County Recorder Carment Stlie

By _____, Deputy

DOCUMENT NO. 241016

Statement of Evidence:

East Quarter Corner Section 1, T 115 N, R 30 W

- 1855 - The original Public Land Survey of the Township Line was completed by John Ryan. A wood post was set in a dirt mound over a deposit of charcoal to mark the corner. Trenches and pits were dug as per instructions to build the mound. Osage orange was planted at the corners of the mound.
- 1895 - I. C. Christleib, McLeod County Surveyor, set an iron monument to mark the corner.
- 1941 - The Minnesota Highway Department right of way map shows that a 1" by 2" iron monument was found at the corner. It was located 3.00 feet east of T.H. 15 engineer's station P.O.T. 935+96.7 about 2.5 feet north of the centerline of a road to the west and a fence line to the east.
- 1942 - All physical evidence of the corner was probably destroyed when T.H. 15 was graded.
- 1969 - The McLeod County Surveyor found a spike at the centerline of T.H. 15 which was within one foot of being midway between the section corners. Being that the right of way map shows that the corner was found 3 feet east of the centerline, a 1" diameter iron pipe was set 3.00 feet east of the found spike. Reference ties were set.
- 1989 - Willard Pellinen, McLeod County Surveyor, found a nail and disc marking the corner. The reference ties were checked.
- 1991 - R. C. Jones, Registered Land Surveyor with Mn/DOT, found a nail and disc marking the corner at the road surface. Two of the reference ties that existed in 1989 were gone. No additional ties were set.

The nail and disc is accepted as the location of the corner because it is 3.82 feet east of T.H. 15 P.O.T. 935+99.44, it is within 0.5 feet of being midway between section corners, and it is in line with a field division west and a tree line east.

For additional information, contact the Mn/DOT Surveys Section at Willmar, Mn 56201.

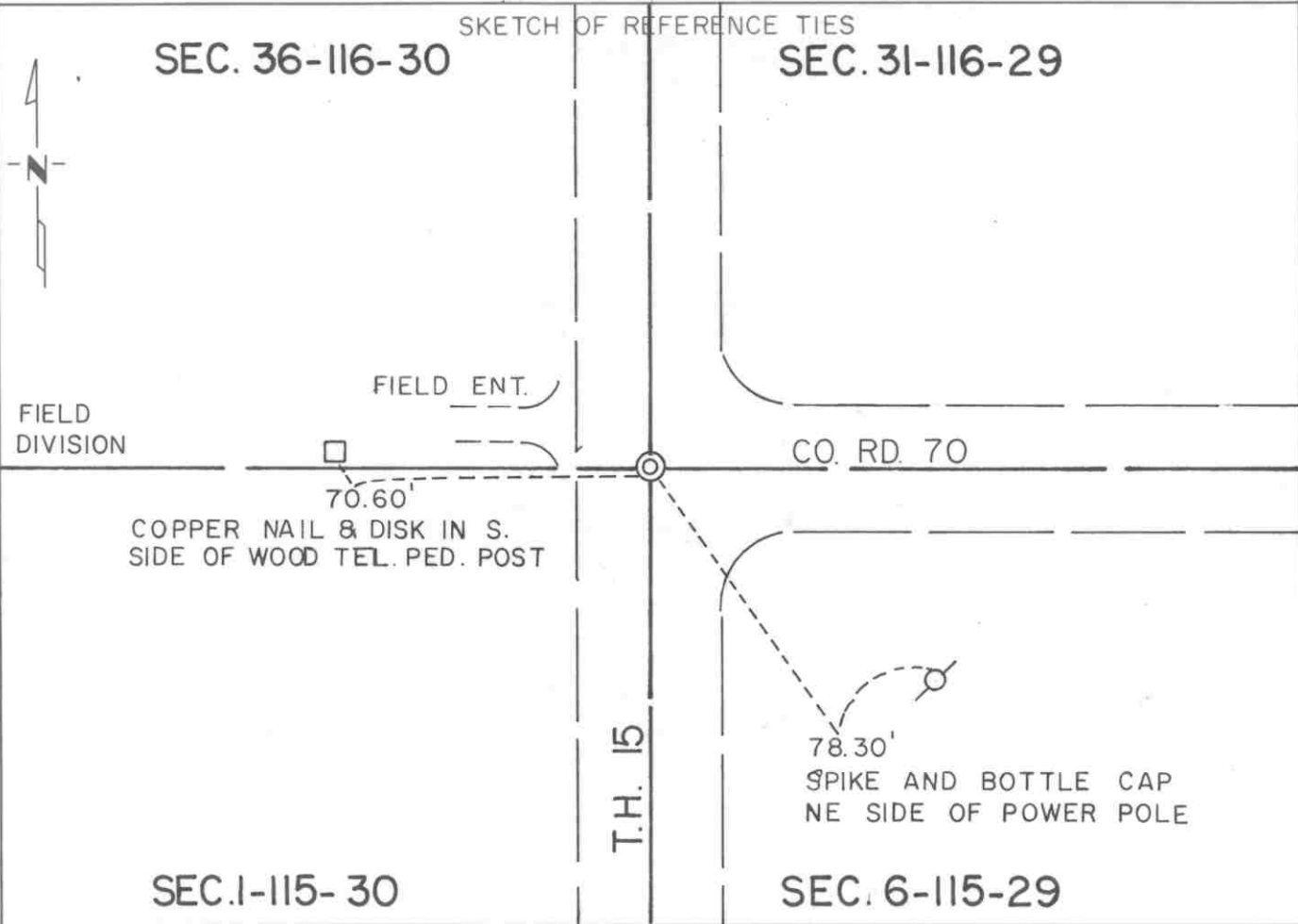
CERTIFICATE OF LOCATION OF GOVERNMENT CORNER

Northeast Corner of Section 1, Township 115 N, Range 30 W, 5th P.M.

STATE OF MINNESOTA, County of McLeod

At the corner location shown on the sketch:

- On Apr. 12, 1990 found a railroad spike at the surface of the highway
DATE
- left monument as found, lowered monument, removed monument (explain)
- On _____ placed a _____
DATE



Statement of evidence relative to this corner location is on back of page.

I hereby certify that this document and the data contained herein was prepared by me or under my direct supervision.

Robert Jones 8-19-91
SIGNATURE DATE

Registration No. 11864

- Land Surveyor, Professional Engineer
- County Surveyor, County Engineer

OFFICE OF THE COUNTY RECORDER
County of McLeod

I hereby certify that this document was filed in the Co. Recorders office at 2 P.M. on the 18th day of sep A.D., 1991

County Recorder Armen Bellie

By _____, Deputy

DOCUMENT NO. 241015

Statement of Evidence:

Northeast Corner Section 1, T 115 N, R 30 W

- 1855 - The original Public Land Survey of the Township Line was completed by John Ryan. A wood post was set in a dirt mound over a deposit of charcoal to mark the corner. Trenches and pits were dug as per instructions to build the mound. Osage orange was planted at the corners of the mound.
- 1895 - I. C. Christlieb, McLeod County Surveyor, set an iron monument to mark the corner.
- 1941 - The Minnesota Highway Department right of way map shows the corner to be located at T.H. 15 engineer's station P.O.T. 962+59.5. It was in line with the centerline of a road to the east and 2 1/2 feet south of a fence line to the west. It is not known whether a monument was found or not.
- 1942 - It appears that all physical evidence of the corner was destroyed when T.H. 15 was graded.
- 1969 - The McLeod County Surveyor measured the east line of Section 1 and found an iron pipe at the centerline of T.H. 15 and the centerline of a county road to the east. The distance from the pipe to the southeast corner of the section was within 1 foot of Christlieb's 1895 survey distance. Reference ties were made to the iron pipe at that time.
- 1990 - R. C. Jones, Registered Land Surveyor with Mn/DOT, found a railroad spike at the road surface at T.H. 15 engineer's station equation P.I. 962+61.00 = P.O.T. 962+58.68.

The railroad spike is accepted as the corner position because it nearly matches the location shown on the highway right of way map and it is in line with the centerline of a county highway to the east.

For additional information, contact the Mn/DOT Surveys Section at Willmar, Mn 56201.

CERTIFICATE OF LOCATION OF GOVERNMENT CORNER

Northeast Corner of
Government Lot No. 1 _____ of Section 1 _____, Township 115 N _____, Range 30 W _____, 5th P.M.

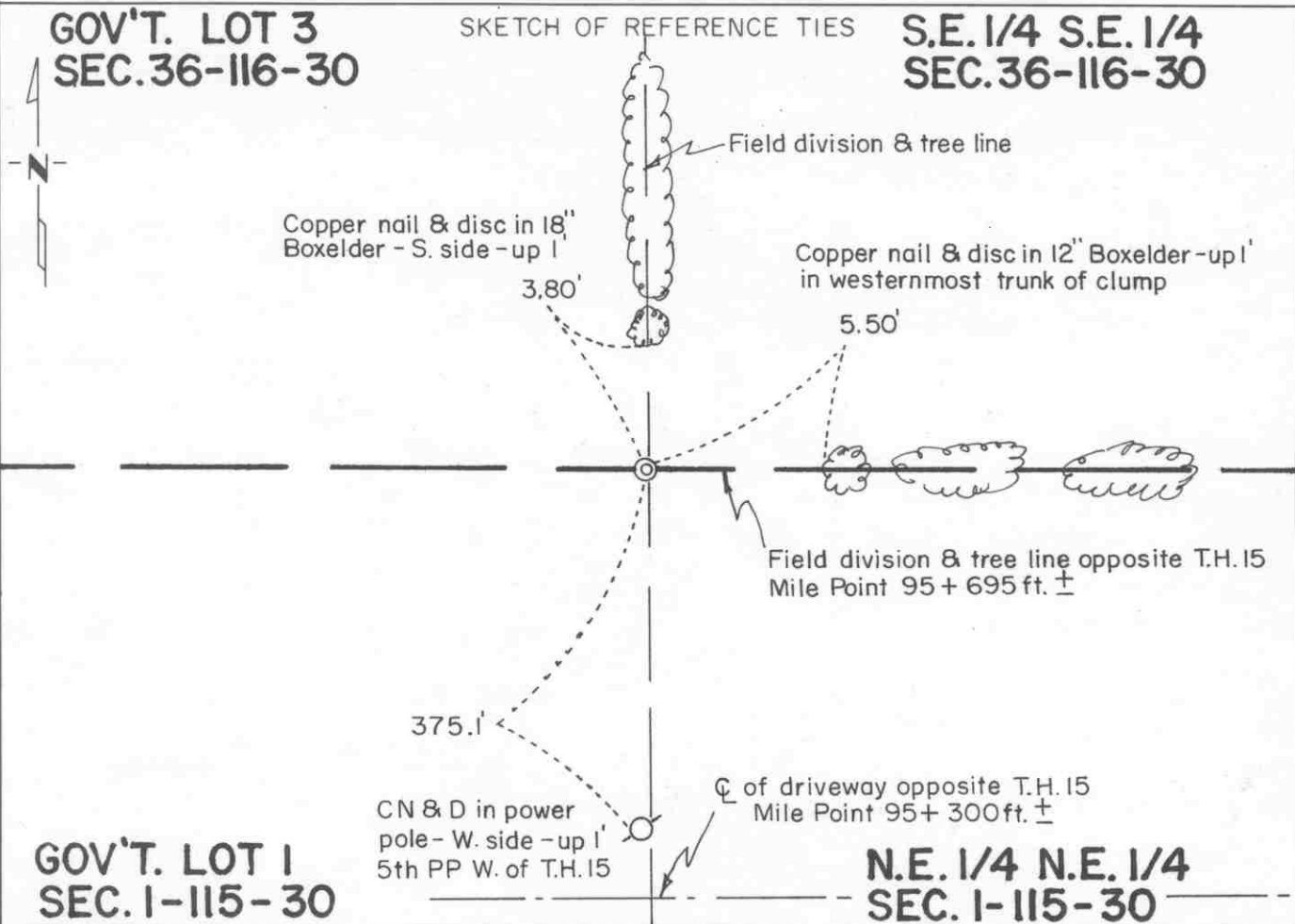
STATE OF MINNESOTA, County of McLeod

At the corner location shown on the sketch:

On Feb. 16, 1993 found a nothing
DATE

left monument as found, lowered monument, removed monument (explain)

On Feb. 16, 1993 placed a 3/4" diameter by 24" long iron pin with an aluminum cap on top
DATE stamped "MnDOT and a punchmark" flush with ground



Statement of evidence relative to this corner location is on back of page.

I hereby certify that this document and the data contained herein was prepared by me or under my direct supervision.

Robert J. Jones
SIGNATURE

3-5-93
DATE

Registration No. 11864

- Land Surveyor, Professional Engineer
 County Surveyor, County Engineer

OFFICE OF THE COUNTY RECORDER

County of McLeod

I hereby certify that this document was filed in the Co. Recorders office at 9 A .M. on the 8th day of March A.D., 1993

County Recorder Armen D. Lie, Mulder

By _____, Deputy

DOCUMENT NO. 250813

Statement of Evidence:

Northeast Corner of Government Lot No. 1
in Section 1, T 115 N, R 30 W

- 1855- The original Public Land Survey of the Township Line was completed by John Ryan. This corner was not set by this survey because the instructions did not require that it be set.
- 1989- Willard Pellinen, McLeod County Surveyor, had recovered all the corners in Section 1 at this time, traversed the section, and subdivided it into the quarter-quarter sections and government lots.
- 1990- A Mn/DOT survey crew tied the corners on the east line of Section 1 into the McLeod County Coordinate System based on NAD 83. Pellinen's traverse was rotated to fit the county coordinate system and the section subdivision was re-done.
- 1993- A Mn/DOT survey crew (Gene East, crew chief) set a 3/4" diameter by 24" long iron pin with an aluminum cap on top stamped "MnDOT" and with a punch hole. It was set flush with the ground.

The iron pin is accepted as the corner because it was set according to Pellinen's section subdivision and it also fits long standing occupation lines; that is, a field division and tree line to the north and to the east.

For additional information, contact the Mn/DOT Surveys Section at Willmar, Mn 56201.

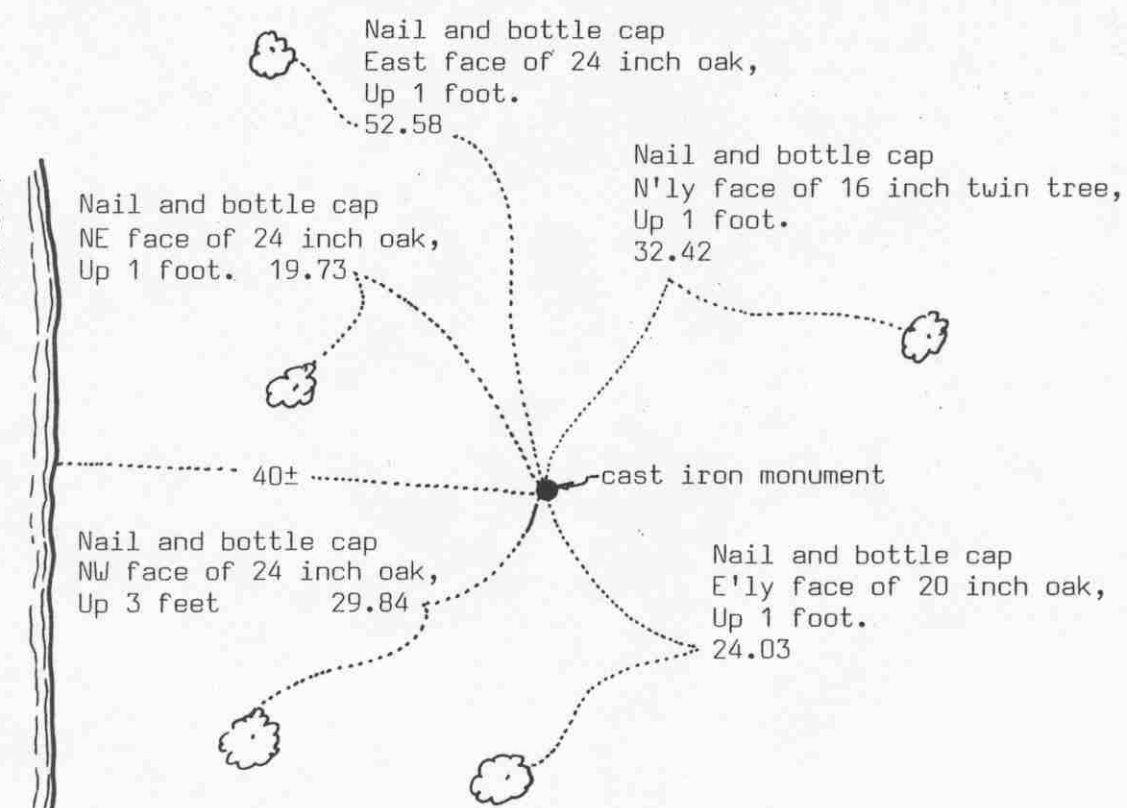
Certificate of Location of Government Corner

SKETCH OF REFERENCE TIES
(NO SCALE)

SECTION 36 T. 116 R. 30



MARION
LAKE



212.32 feet west to computed location of meander corner (in lake)
 2262.31 feet east to northeast corner of section.
 377.30 feet west to computed location of North Quarter corner (in lake)
 Witness corner and meander corner and north quarter corner on line
 between the northeast corner of the section and meander corner west
 of Lake Marion.

SECTION 1 T. 115 R. 30

Statement of evidence relative to this corner location on sheet 2

I hereby certify that this document was prepared by me or under my direct supervision.

Willard Pellinen

Willard Pellinen
McLeod County Surveyor
License No. 9626

Date NOV. 27, 1992.

OFFICE OF THE COUNTY RECORDER
MCLEOD COUNTY, MINNESOTA.

I hereby certify that this document was filed in this office at 9 o'clock A. M. on the 6th day of January, 1993.

Carmen Ostlie Mulder, County Recorder

By _____, Deputy

Document No. 249894

Certificate of Location of Government Corner

February 28, 1985. We set an iron pipe along the north line of the Northeast Quarter of Section 1 on line between the northeast corner of the section and the computed location of the meander corner on the west side of Lake Marion. We took available reference ties.

This witness corner is 212.32 feet east of the meander corner on the east side of Lake Marion (meander corner falls in the lake now). We measured 2262.31 feet from this witness corner to the northeast corner of Section 1. Our distance from the northeast corner of the section to the computed location of the meander corner is 2474.63 feet compared with 2475 feet by the government in 1855.

July 10, 1985. We replaced the iron pipe with a McLeod County cast iron monument.

March 7, 1989. We found the monument in good condition and checked the reference ties.

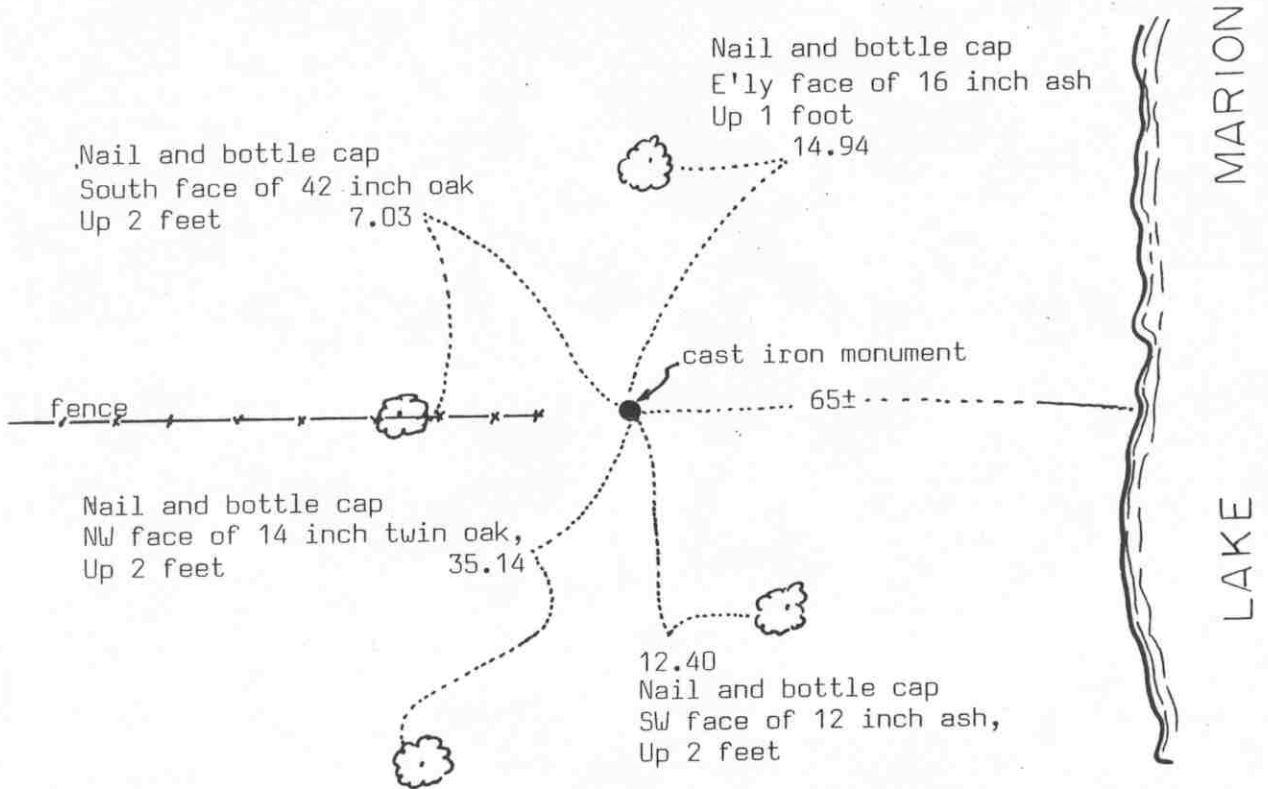
Certificate of Location of Government Corner

SKETCH OF REFERENCE TIES

(NO SCALE)

SECTION 36 T.116 R. 30

154.87 feet east to computed location of meander corner (in lake)
837.62 feet west to northwest corner of Section 1



SECTION 1 T.115 R. 30

Statement of evidence relative to this corner location on sheet 2

I hereby certify that this document was prepared by me or under my direct supervision.

Willard Pellinen
Willard Pellinen
McLeod County Surveyor
License No. 9626

Date November 27, 1992

OFFICE OF THE COUNTY RECORDER
MCLEOD COUNTY, MINNESOTA.

I hereby certify that this document was filed in this office at 9 o'clock A. M. on the 6th day of January, 1993.

Carmen K. Miller, County Recorder

By _____, Deputy

Document No. 249895

Witness corner to meander corner west
of Lake Marion along north line of
Section 1

Sheet 2 of 2 sheets

corner, Section 1, Township 115 North, Range 30 West

Certificate of Location of Government Corner

February 28, 1985. We set an iron pipe along the east-west fence along the north line of Section 1. Fence has been accepted as section line by adjoining property owners. We took available reference ties.

This witness corner is 154.87 feet west of the computed location of the meander corner west of Lake Marion. Meander corner now falls in the lake. This witness corner is 837.62 feet east of the northwest corner of Section 1. Our distance from the northwest corner of the section to the meander corner is 992.49 feet compared with the government distance of 992.64 in 1855.

We computed an angle of 179 degrees 30 minutes 39 seconds at the meander corner from the northwest corner of the section to the computed meander corner at the east side of Lake Marion, on north side of the section line. The meander corner on the east side of the lake was computed along a straight line from the meander corner on the west side to the northeast corner of the section. The computed location of the north quarter corner (in the lake) is 1647.11 feet east of the meander corner on the west side of the lake, on line between the 2 meander corners.

July 10, 1985. We replaced the iron pipe with a McLeod County cast iron monument.

March 7, 1989. We found the monument in good condition and checked the reference ties.

CERTIFICATE OF LOCATION OF GOVERNMENT CORNER

East Quarter _____ Corner of Section 2, Township 115 N, Range 30 W, 5th P.M.

STATE OF MINNESOTA, County of McLeod

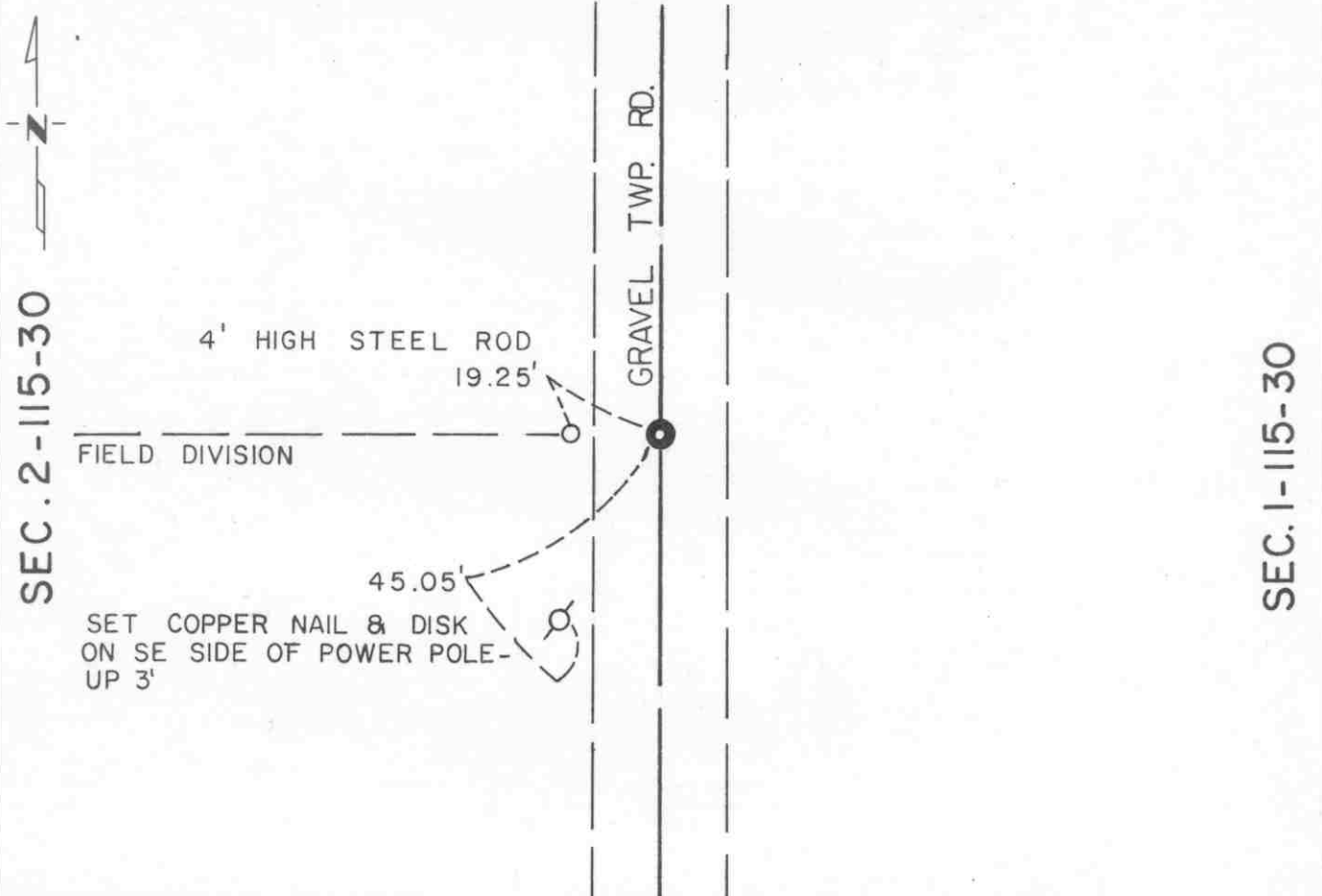
At the corner location shown on the sketch:

On Apr. 13, 1990 found a 2 1/2" by 1 1/2" iron monument about 6" below road surface
DATE

left monument as found, lowered monument, removed monument (explain)

On _____ placed a _____
DATE

SKETCH OF REFERENCE TIES



Statement of evidence relative to this corner location is on back of page.

I hereby certify that this document and the data contained herein was prepared by me or under my direct supervision.

Robert Jones
SIGNATURE

8-19-91
DATE

Registration No. 11864

- Land Surveyor, Professional Engineer
 County Surveyor, County Engineer

OFFICE OF THE COUNTY RECORDER

County of McLeod

I hereby certify that this document was filed in the Co. Recorders office at 2 P.M. on the 18th day of Sep A.D. 1991

County Recorder *Carmen Ostlie*

By _____, Deputy

DOCUMENT NO. 241018

Statement of Evidence:

East Quarter Corner Section 2, T 115 N, R 30 W

- 1855 - The original Public Land Survey was completed by Thomas Simpson. A wood post was set over a charred stake in a dirt mound to mark the corner. Trenches and pits were dug as per instructions to build the mound. Osage orange seeds were planted at the northeast and southwest corners of the mound.
- 1895 - I. C. Christlieb, McLeod County Surveyor, set a 2 1/2" by 1 1/2" iron monument to mark the corner midway between the section corners.
- 1985 - Willard Pellinen, McLeod County Surveyor, found the iron monument set by Christlieb about 6" below the road surface. The monument was left in place and reference ties were set. The monument was within one foot of being midway between the section corners.
- 1990 - R. C. Jones, Registered Land Surveyor with Mn/DOT, recovered the iron monument as described by Pellinen. The description of one reference tie was corrected.

The iron monument is accepted as the corner position because it fits long standing occupation lines. It is at the centerline of a north/south gravel road, in line with a field division west, and has been considered to be the corner for at least 95 years.

For additional information, contact the Mn/DOT Surveys Section at Willmar, Mn 56201.

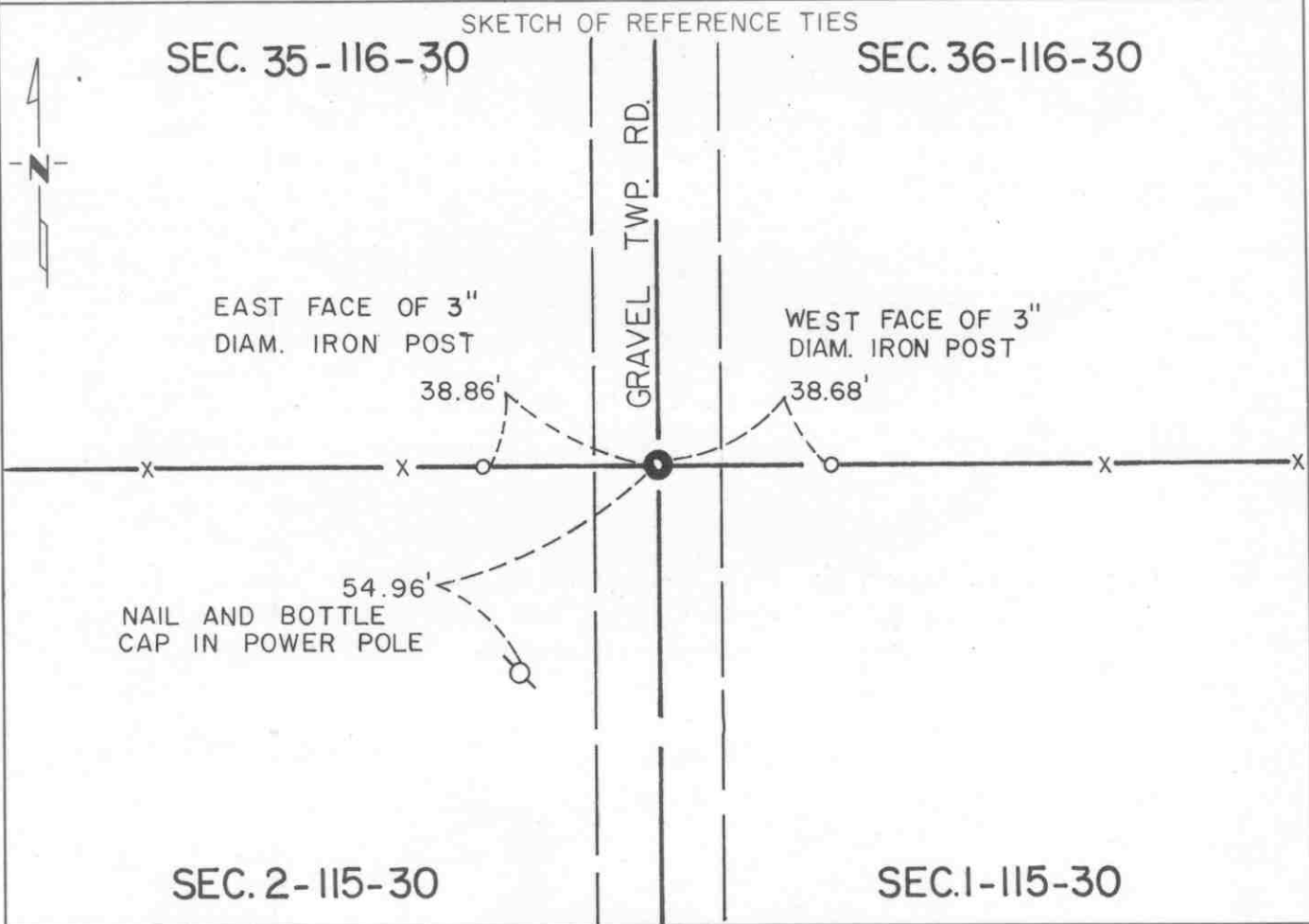
CERTIFICATE OF LOCATION OF GOVERNMENT CORNER

Northeast Corner of Section 2, Township 115 N, Range 30 W, 5th P.M.

STATE OF MINNESOTA, County of McLeod

At the corner location shown on the sketch:

- On Apr 13 1990 found a cast iron monument about 6" below the road surface
DATE
- left monument as found, lowered monument, removed monument (explain)
- On _____ placed a _____
DATE



Statement of evidence relative to this corner location is on back of page.

I hereby certify that this document and the data contained herein was prepared by me or under my direct supervision.

Robert Gans 8-19-91
SIGNATURE DATE

Registration No. 11864

Land Surveyor, Professional Engineer
 County Surveyor, County Engineer

OFFICE OF THE COUNTY RECORDER
 County of McLeod

I hereby certify that this document was filed in the Co. Recorders office at 2 P.M. on the 19th day of Sep A.D., 1991

County Recorder Carmen Ostlie
 By _____, Deputy
 DOCUMENT NO. 241017

Statement of Evidence:

Northeast Corner Section 2, T 115 N, R 30 W

- 1855 - The original Public Land Survey of the Township Line was completed by John Ryan. A wood post was set in a dirt mound over a deposit of charcoal to mark the corner. Trenches and pits were dug as per instructions to build the mound. Osage orange was planted at the corners of the mound.
- 1895 - I. C. Christlieb, McLeod County Surveyor, remonumented the township and set a 2 1/2" square iron monument to mark the corner.
- 1969 - McCombs, Knutson, and Associates found a 2 1/2 " square iron monument at the corner and set a McLeod County cast iron monument over it.
- 1985 - Willard Pellinen, McLeod County Surveyor, found the cast iron monument about 6" below the road surface in good condition. New reference ties were set.
- 1989 - Willard Pellinen recovered the cast iron monument and the ties all in good condition.
- 1990 - R. C. Jones, Registered Land Surveyor with Mn/DOT, recovered the cast iron monument and all the ties in good condition as shown on the certificate file by Pellinen in 1987.

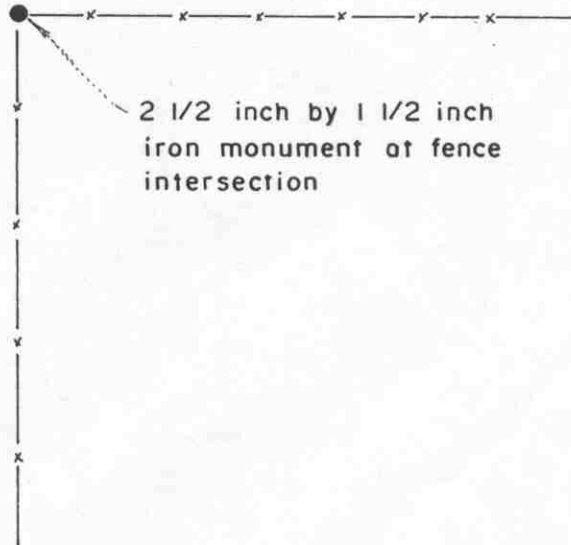
The cast iron monument is accepted as the corner position because it perpetuates the position of the monument set in 1895. Christlieb most probably found evidence of the original P.L.S. corner. It also fits long standing occupation lines; that is, the centerline of a north/south road and fence lines east and west.

For additional information, contact the Mn/DOT Surveys Section at Willmar, Mn 56201.

Certificate of Location of Government Corner



SKETCH OF REFERENCE TIES
(NO SCALE)



Statement of evidence relative to this corner location on sheet 2

I hereby certify that this document was prepared by me or under my direct supervision.

Willard Pellinen
 Willard Pellinen
 McLeod County Surveyor
 License No. 9626
 Date March 10, 1987

OFFICE OF THE COUNTY RECORDER
MCLEOD COUNTY, MINNESOTA.

I hereby certify that this document was filed in this office at 8 o'clock A.M. on the 18th day of October, 1988.

Carmen Ollie, County Recorder
 By _____, Deputy

Document No. 225056

Certificate of Location of Government Corner

This corner was established by the Government in 1855 and was monumented by a wood post in a mound of earth.

In 1895 I.C. Christlieb, county surveyor, monumented Township 115, Range 30 (Collins Township) and set a 2½ inch by 1½ inch iron monument at this corner.

In 1969 McCombs Knutson Associates found this monument at a fence intersection. MKA distances to the northeast and northwest corners of Section 2 was about 6 feet longer than Christlieb had. Most of the distances in Collins Township actually are from 2 to 7 feet longer than Christlieb's distances.

We feel this monument has perpetuated the true location of the north quarter corner of Section 2.

Certificate of Location of Government Corner

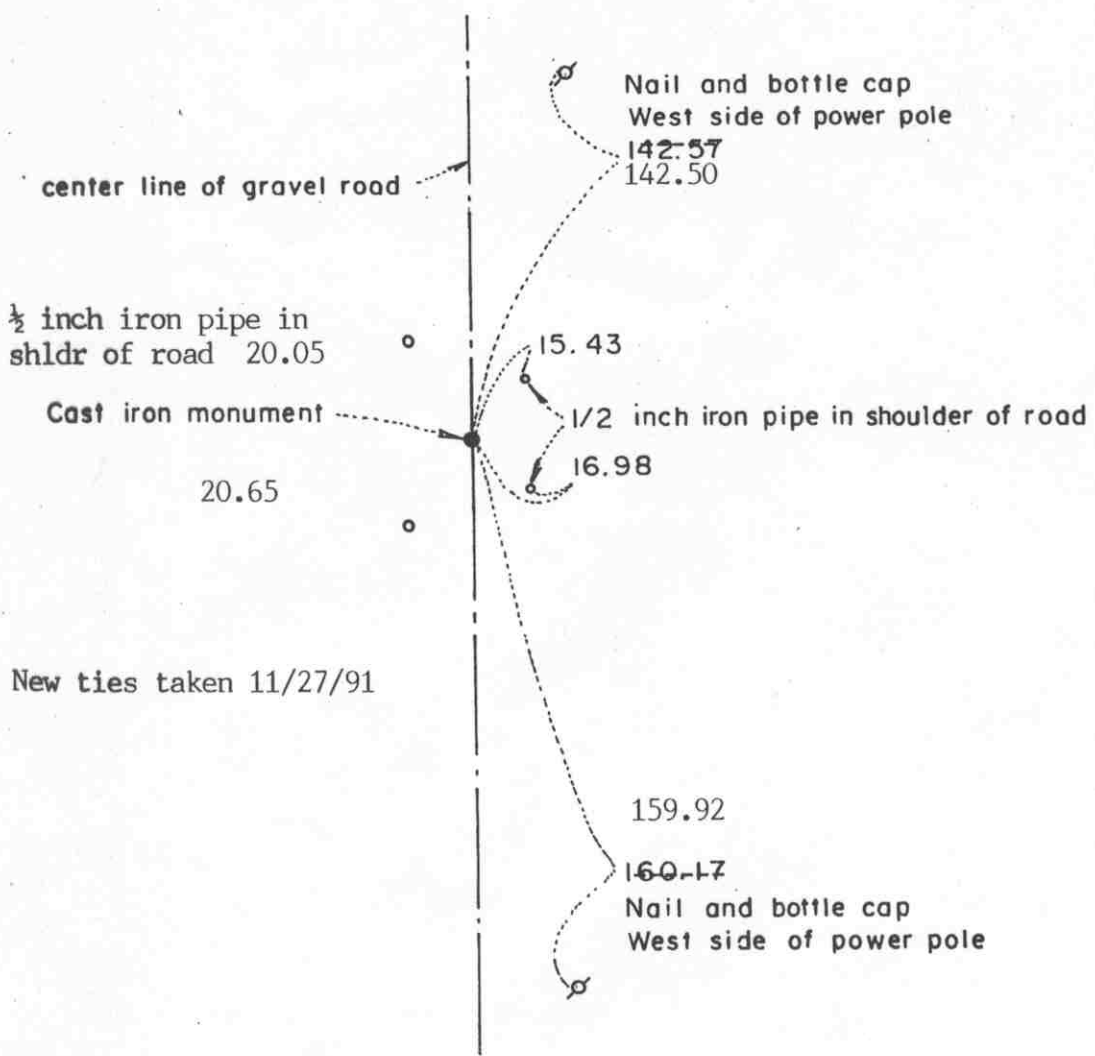


SKETCH OF REFERENCE TIES

(NO SCALE)

SECTION 3

SECTION 2



Statement of evidence relative to this corner location on sheet 2

I hereby certify that this document was prepared by me or under my direct supervision.

Willard Pellinen
 Willard Pellinen
 McLeod County Surveyor
 License No. 9626

Date June 22, 1987

OFFICE OF THE COUNTY RECORDER
 MCLEOD COUNTY, MINNESOTA.

I hereby certify that this document was filed in this office at 9 o'clock A.M. on the 20th day of Aug, 1992.

Carman Ostlie, County Recorder

By _____, Deputy

Document No. 247335

Certificate of Location of Government Corner

This corner was established by the Government in 1855 and was monumented by a wood post in a mound of earth.

In 1895, I.C.Christlieb, county surveyor, remonumented Collins Township and set a $2\frac{1}{2}$ inch by $1\frac{1}{2}$ inch iron monument at this corner one half way between the section corners.

In June, 1981, we measured the east line of Section 3 and set a temporary corner one half way between the section corners.

On June 11, 1981, we dug for this corner, John Tupa from Hutchinson with a backhoe. We dug a hole about 8 feet long by 6 feet wide and $4\frac{1}{2}$ feet deep, but found nothing.

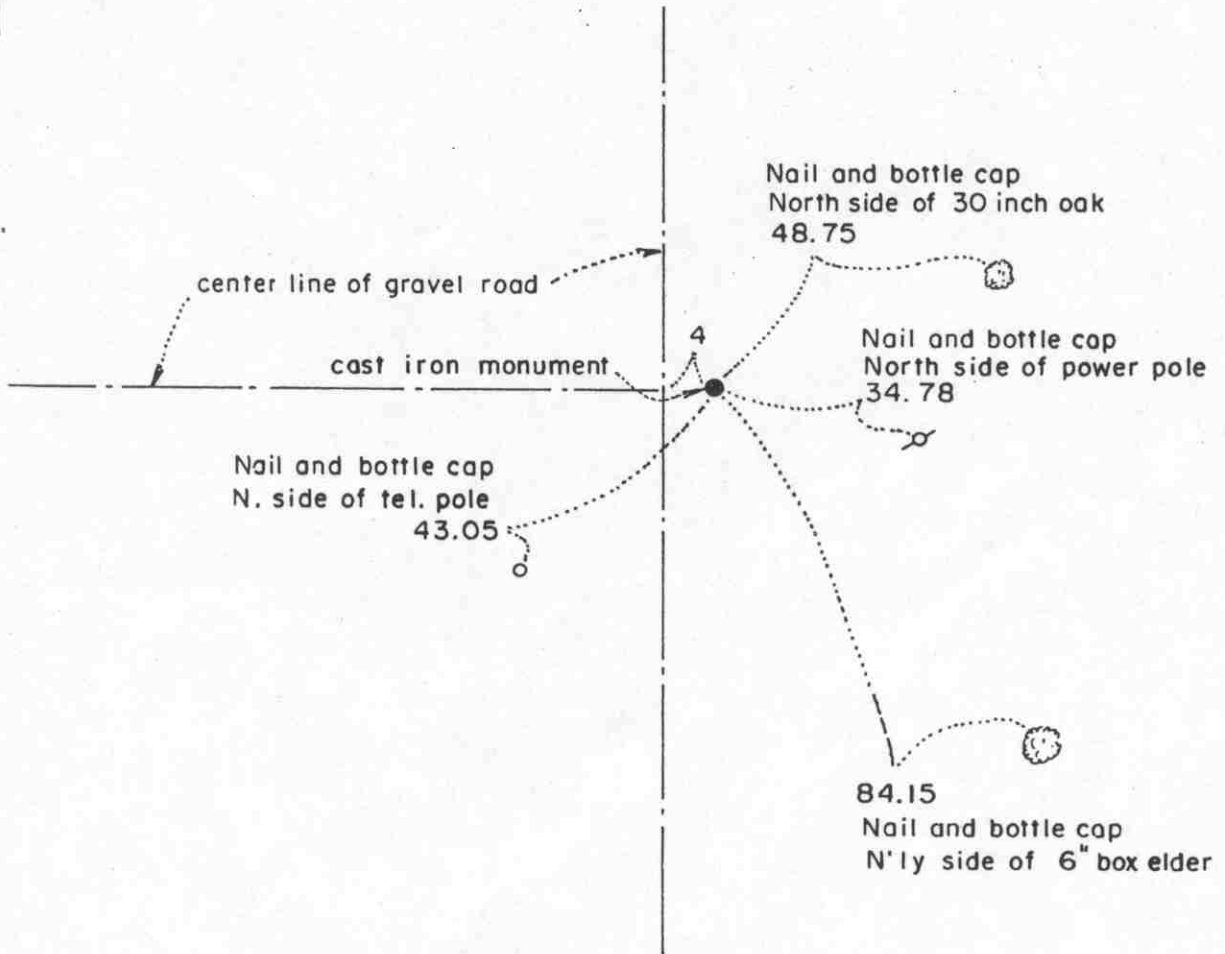
On July 9, 1981, we set a McLeod County cast iron monument on line and split between the section corners and took reference ties.

November 27, 1991. We found the monument in good condition down 8 inches below the surface of the gravel road and took new reference ties.

Certificate of Location of Government Corner



SKETCH OF REFERENCE TIES
(NO SCALE)



Statement of evidence relative to this corner location on sheet 2

I hereby certify that this document was prepared by me or under my direct supervision.

Willard Pellinen
Willard Pellinen
McLeod County Surveyor
License No. 9626

Date March 10, 1987

OFFICE OF THE COUNTY RECORDER
MCLEOD COUNTY, MINNESOTA.

I hereby certify that this document was filed in this office at 8 o'clock A.M. on the 18th day of October, 1988.

Carmen Ostlie, County Recorder

By _____, Deputy

Document No. 225058

Certificate of Location of Government Corner

This corner was established by the Government in 1855 and was monumented by a wood post in a mound of earth.

In 1895, I. C. Christlieb, county surveyor, set a 2½ inch by 2½ inch monument at this corner.

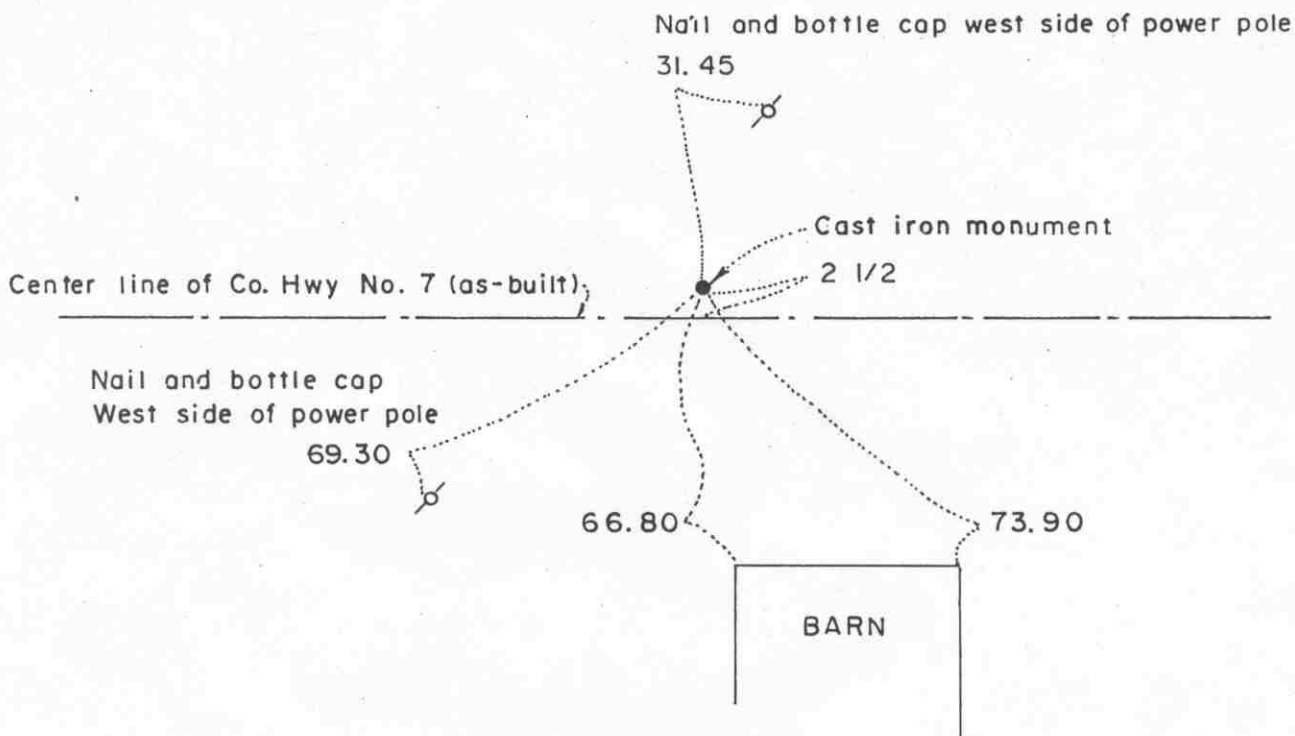
In 1969 McCombs Knutson Associates found the monument set by Christlieb down 2 feet below the surface of the road. They took reference ties and set a McLeod County cast iron monument over the old monument.

Certificate of Location of Government Corner



SKETCH OF REFERENCE TIES

(NO SCALE)



Statement of evidence relative to this corner location on sheet 2

I hereby certify that this document was prepared by me or under my direct supervision.

Willard Pellinen
Willard Pellinen
McLeod County Surveyor
License No. 9626

Date Sept. 12, 1987

OFFICE OF THE COUNTY RECORDER
MCLEOD COUNTY, MINNESOTA.

I hereby certify that this document was filed in this office at 8 o'clock A. M. on the 18th day of October, 19 88.

Carmen Pottier, County Recorder
By _____, Deputy

Document No. 225059

Certificate of Location of Government Corner

This corner was established by the Government in 1855 and was monumented by a wood post in a mound of earth.

In 1895 I.C.Christlieb monumented the Township of Collins and his map shows a stone at this corner.

In October, 1970, McCombs Knutson Associates measured the north line of Section 3 and dug for the corner at a proration of Christlieb's distances to the northwest and northeast corners of Section 3. (John Tupa from Hutchinson with a backhoe) They found a stone, 6 inches in diameter, 8 inches long, with point up, down $3\frac{1}{2}$ feet below the surface of the road. Christlieb distance to northwest corner was 2660, MKA distance was 2665.37. Christlieb distance to northeast corner was 2645, MKA distance was 2651.76.

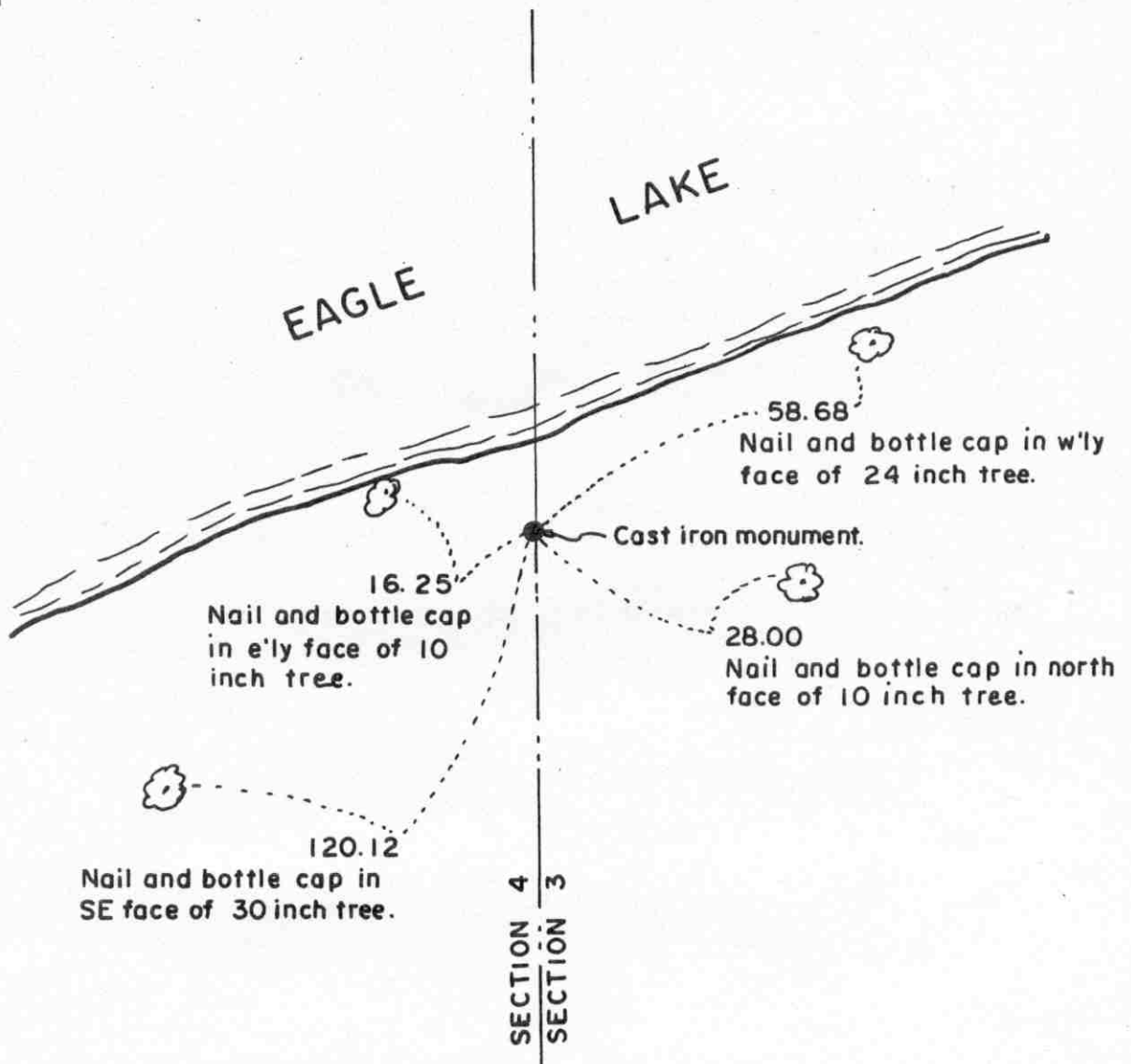
MKA set cast iron monument in August 1971 and took reference ties.

We feel the stone found by MKA was the same stone shown in Christlieb survey map and has perpetuated the true north quarter corner of Section 3.

Certificate of Location of Government Corner

Point along east line of corner, Section 4, Township 115 North, Range 30 West

SKETCH OF REFERENCE TIES (NO SCALE)



Statement of evidence relative to this corner location on sheet 2

I hereby certify that this document was prepared by me or under my direct supervision.

Willard Pellinen
 Willard Pellinen
 McLeod County Surveyor
 License No. 9626.

Date Dec. 20, 1995

OFFICE OF THE COUNTY RECORDER MCLEOD COUNTY, MINNESOTA

I hereby certify that this document was filed in this office at 9 o'clock A.M. on the 9th day of January 19 96.

Cornea Ostlie Mulder, County Recorder

By Charleen Engelman, Deputy.

Document No. 270188

Certificate of Location of Government Corner

Point along line, Section 4, Township 115 North, Range 30 West

Along east line of Section 4, south of Eagle Lake.

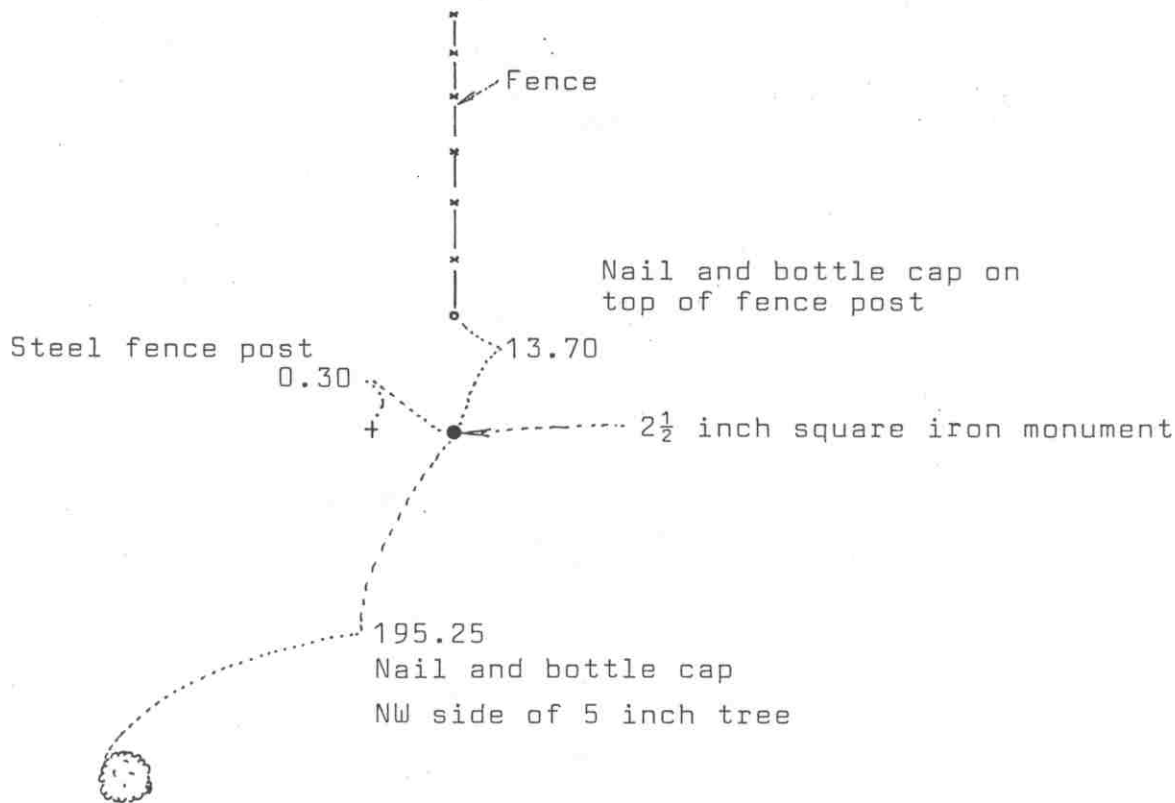
1979. Dickman Knutson, county surveyor, set a cast iron monument along the east line of Section 4, south of Eagle Lake and took available reference ties. He set the monument on a straight line between the NE and SE corners of Section 4.

Certificate of Location of Government Corner



SKETCH OF REFERENCE TIES

(NO SCALE)



Statement of evidence relative to this corner location on sheet 2

I hereby certify that this document was prepared by me or under my direct supervision.

Willard Pellinen
Willard Pellinen
McLeod County Surveyor
License No. 9626

Date September 12, 1987

OFFICE OF THE COUNTY RECORDER
MCLEOD COUNTY, MINNESOTA.

I hereby certify that this document was filed in this office at 8 o'clock A.M. on the 18th day of October, 1988.

Carmen Ostlie, County Recorder
By _____, Deputy

Document No. 225060

Certificate of Location of Government Corner

This corner was established by the Government in 1855 and was monumented by a wood post in a mound of earth.

In 1895, I.C.Christlieb monumented the Township of Collins and his map shows an iron monument at this corner.

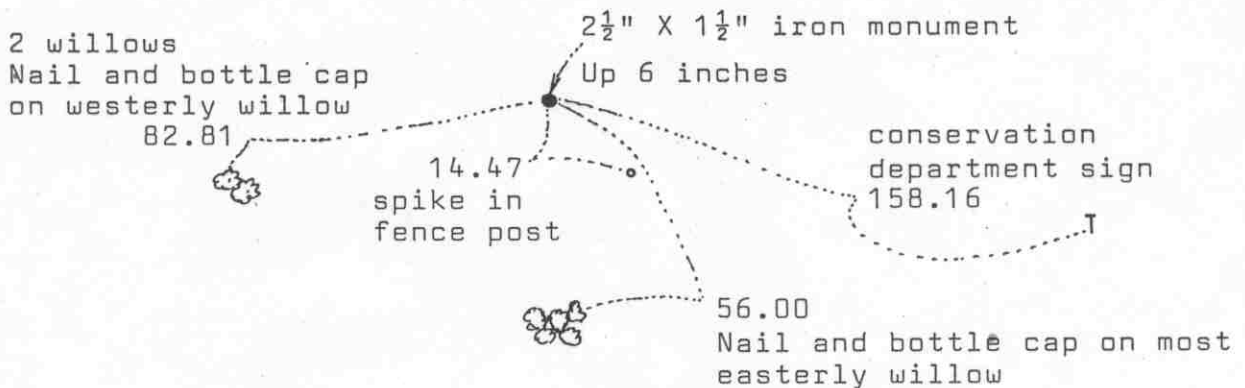
In 1970, I found a 2½ inch square iron monument set by Christlieb. This was in a swamp, under 1 foot of water.

We feel this monument has perpetuated the true corner of sections 3 and 4 in Township 115, Range 30 and sections 33 and 34 in Township 116, Range 30.

Certificate of Location of Government Corner



SKETCH OF REFERENCE TIES
(NO SCALE)



Statement of evidence relative to this corner location on sheet 2

I hereby certify that this document was prepared by me or under my direct supervision.

Willard Pellinen
Willard Pellinen
McLeod County Surveyor
License No. 9626

Date Sept. 4, 1987

OFFICE OF THE COUNTY RECORDER
MCLEOD COUNTY, MINNESOTA.

I hereby certify that this document was filed in this office at 8 o'clock A.M. on the 18th day of October, 1988.

Carmen Ostlie, County Recorder
By _____, Deputy

Document No. 225061

Certificate of Location of Government Corner

This corner was established by the Government in 1855 and was monumented by a wood post in a mound of earth. No ties shown in Government notes.

In 1895, I.C.Christlieb remonumented Collins Township and set a $2\frac{1}{2}$ by $1\frac{1}{2}$ inch iron monument at this corner.

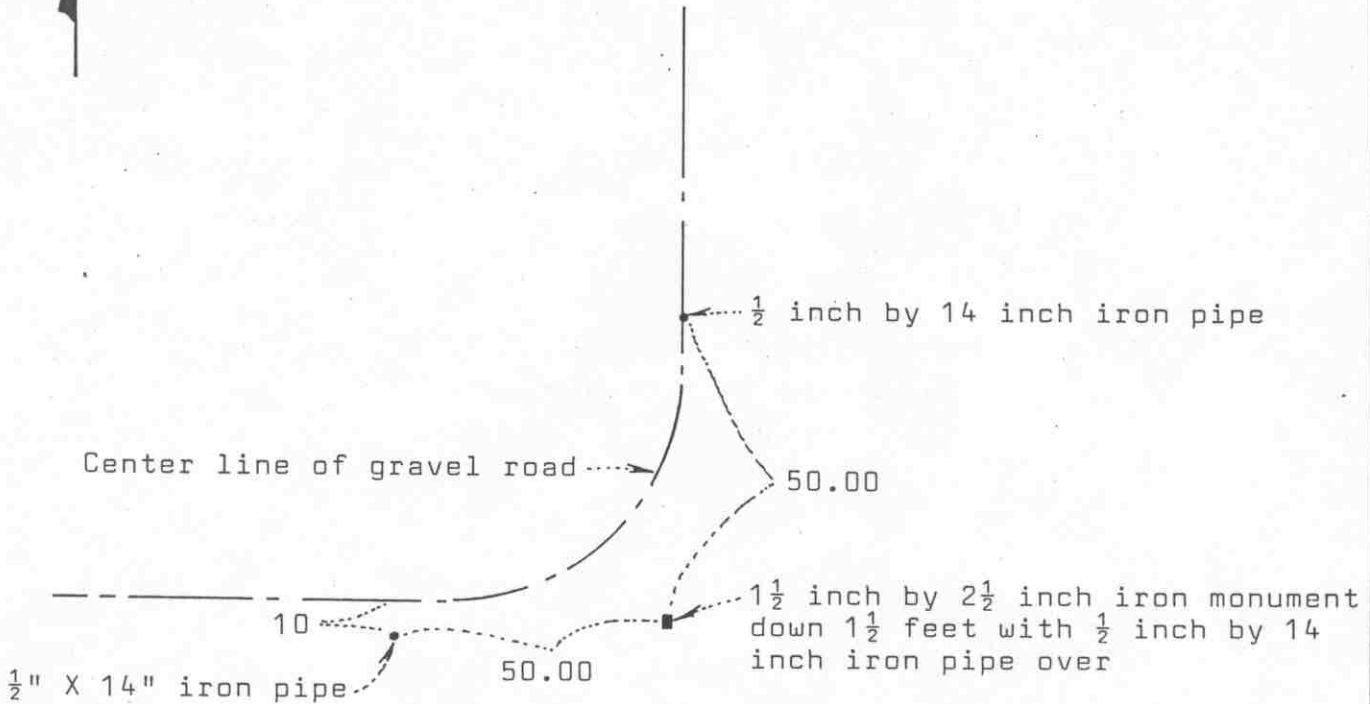
In September 1969 McCombs Knutson Associates (Dickman Knutson was county surveyor) found the iron monument set by Christlieb and took reference ties.

We feel the iron monument set by Christlieb has perpetuated the true north quarter of Section 4.

Certificate of Location of Government Corner



SKETCH OF REFERENCE TIES
(NO SCALE)



Statement of evidence relative to this corner location on sheet 2

I hereby certify that this document was prepared by me or under my direct supervision.

Willard Pellinen

Willard Pellinen
McLeod County Surveyor
License No. 9626

Date Sept. 3, 1987

OFFICE OF THE COUNTY RECORDER
MCLEOD COUNTY, MINNESOTA.

I hereby certify that this document was filed in this office at 8 o'clock A.M. on the 18th day of October, 1988.

Carmen Otlie, County Recorder

By _____, Deputy

Document No. 225062

Certificate of Location of Government Corner

This corner was established by the Government in 1855 and was monumented by a wood post in a mound of earth.

In 1896 I, C Christlieb monumented the Township of Collins and set an iron monument at this corner.

On July 11, 1977, I found a $1\frac{1}{2}$ inch by $2\frac{1}{2}$ inch solid iron monument set by Christlieb down $1\frac{1}{2}$ feet below the surface. I set a $\frac{1}{2}$ inch by 14 inch iron pipe over the monument and took reference ties.

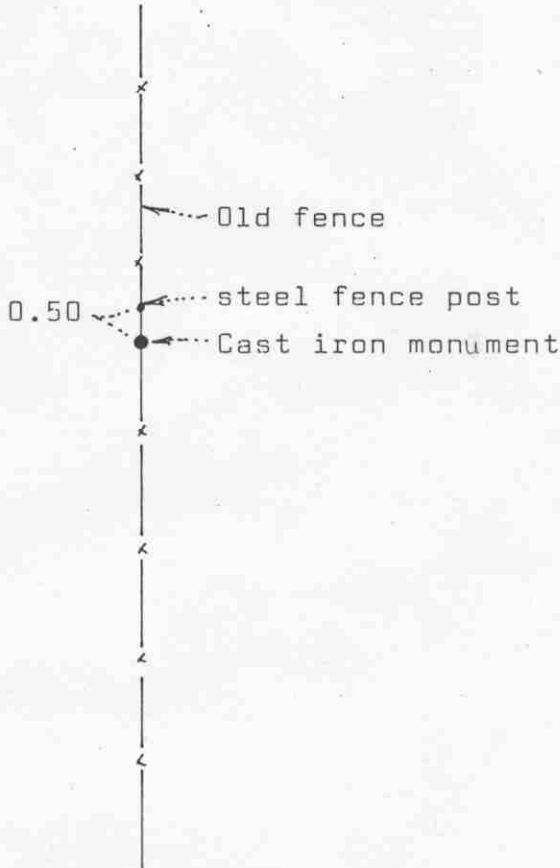
We feel this monument set by Christlieb has perpetuated the true east quarter corner of Section 5.

Certificate of Location of Government Corner



SKETCH OF REFERENCE TIES

(NO SCALE)



Statement of evidence relative to this corner location on sheet 2

I hereby certify that this document was prepared by me or under my direct supervision.

Willard Pellinen

Willard Pellinen
McLeod County Surveyor
License No. 9626

Date September 7, 1987

OFFICE OF THE COUNTY RECORDER
MCLEOD COUNTY, MINNESOTA.

I hereby certify that this document was filed in this office at 8 o'clock A.M. on the 18th day of October, 1988.

Carmin Ostlie, County Recorder
By _____, Deputy

Document No. 225063

Certificate of Location of Government Corner

This corner was established in 1855 by the Government and was monumented by a wood post in a mound of earth.

In 1895 I.C.Christlieb remonumented Collins Township and his map shows an iron monument at this corner.

In 1958, E.K.Rychner of the State Conservation Department found a steel fence post along a north-south fence line and used it as the northeast corner.

In September, 1969, McCombs-Knutson Associates (Dickman Knutson was County Surveyor) found the steel fence post used by Rychner. They searched the area but couldn't find any monument. They set a cast iron monument in place of the steel fence post and set the fence post by the monument.

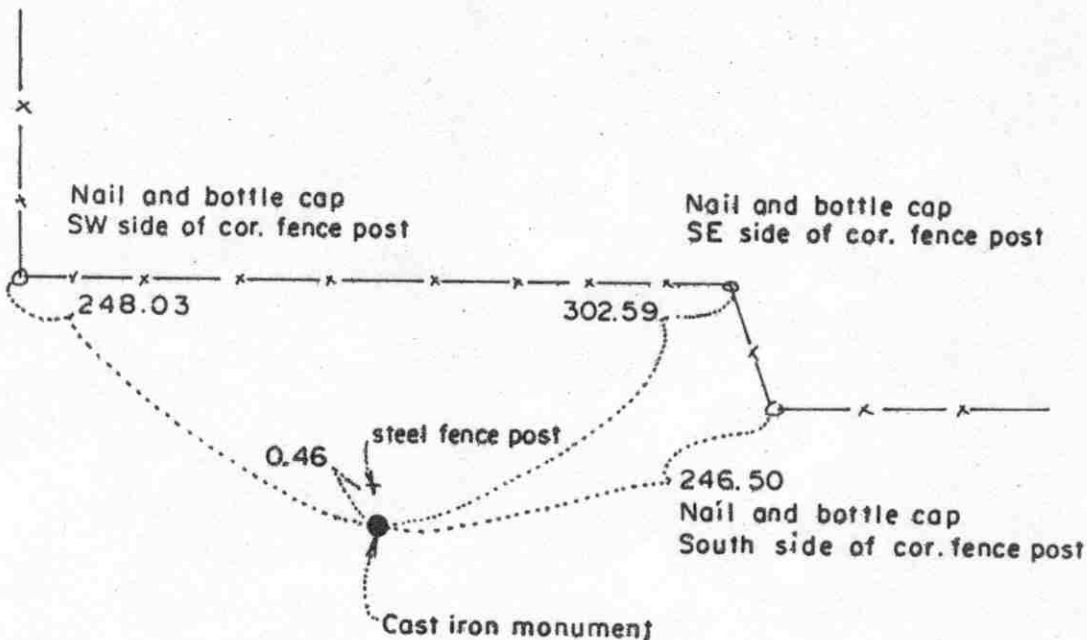
In February 1986, we measured the north line of Section 5 and found the distance from the north quarter corner to the northeast corner was about 5 feet longer than Christlieb had in 1895. We have found that Christlieb's distances in Collins Township are all from 2 to 7 feet shorter than we measure.

We feel this corner found by Rychner and McCombs-Knutson is the true northeast corner of Section 5.

Certificate of Location of Government Corner

SKETCH OF REFERENCE TIES

(NO SCALE)



Statement of evidence relative to this corner location on sheet 2

I hereby certify that this document was prepared by me or under my direct supervision.

Willard Pellinen

Willard Pellinen
McLeod County Surveyor
License No. 9626

Date 1/4/89

OFFICE OF THE COUNTY RECORDER
MCLEOD COUNTY, MINNESOTA.

I hereby certify that this document was filed in this office at 1 o'clock P.M. on the 31st day of Jan., 1989.

Carmen Ostlie, County Recorder

By _____, Deputy

Document No. 226705

North Quarter corner, Section 5, Township 115 North, Range 30 West

Certificate of Location of Government Corner

This corner was originally set in 1855 by John Ryan of the Government Land Office. He set a wood post, deposited charcoal, dug pits and trench and built a mound and planted osage orange seeds at the corners of the mound as per instructions.

In 1895 I.C.Christlieb remonumented Collins Township and set an iron monument ($2\frac{1}{2}$ inch by $1\frac{1}{2}$ inch on top) at this corner.

On September 9, 1969 we found the monument set by Christlieb and took reference ties.

On March 3, 1976, we took new reference ties to the monument.

On Feb. 12, 1986, we found that the monument had been plowed out and we set a new cast iron monument at the corner and took reference ties. We measured the north line of Section 5 and had a distance of 2676.00 feet to the northwest corner and 2672.93 feet to the northeast corner of Section 5, compared with distances of 2668 feet by Christlieb to each corner in 1895. Most of Christlieb's distances in Collins Township are 4 to 8 feet shorter than our measured distances.

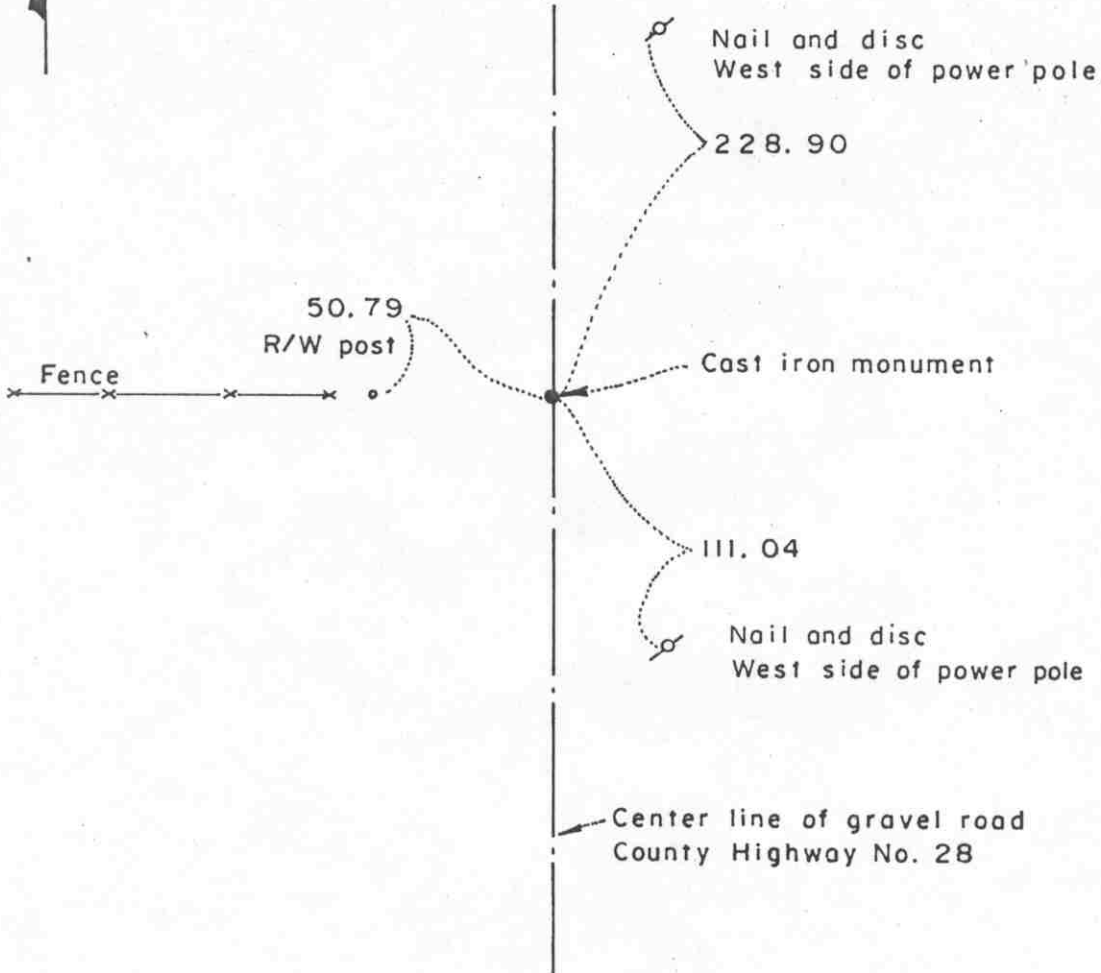
We feel that the location of the monument set by Christlieb in 1895 has perpetuated the correct north quarter corner of Section 5.

Certificate of Location of Government Corner



SKETCH OF REFERENCE TIES

(NO SCALE)



Statement of evidence relative to this corner location on sheet 2

I hereby certify that this document was prepared by me or under my direct supervision.

Willard Pellinen

Willard Pellinen
McLeod County Surveyor
License No. 9626

Date June 23, 1988

OFFICE OF THE COUNTY RECORDER
MCLEOD COUNTY, MINNESOTA.

I hereby certify that this document was filed in this office at 8 o'clock A.M. on the 18th day of October, 1988.

Carmen Dotlie, County Recorder

By _____, Deputy

Document No. 225068

Certificate of Location of Government Corner

This corner was originally established by Thomas Simpson of the Government Land Office and was monumented by a charred stake in a mound.

In 1895, I.C.Christlieb remonumented Collins Township and set an iron monument at this corner.

In 1975 McCombs Knutson Associates dug for this corner, but only found a spike which was probably set by the County Highway Department. This was on the approximate center line of the road and in line with a fence to the west.

Mrs. John Klabunde, 80 years old (in 1975) , had lived in the Southeast Quarter of Section 6 all her life, said the fence has been there as long as she can remember.

This location is within 1 foot of Christlieb's 1895 distance to the NE corner of Section 6.

MKA (Dickman Knutson, County Surveyor) set a cast iron monument at the location of the found spike.

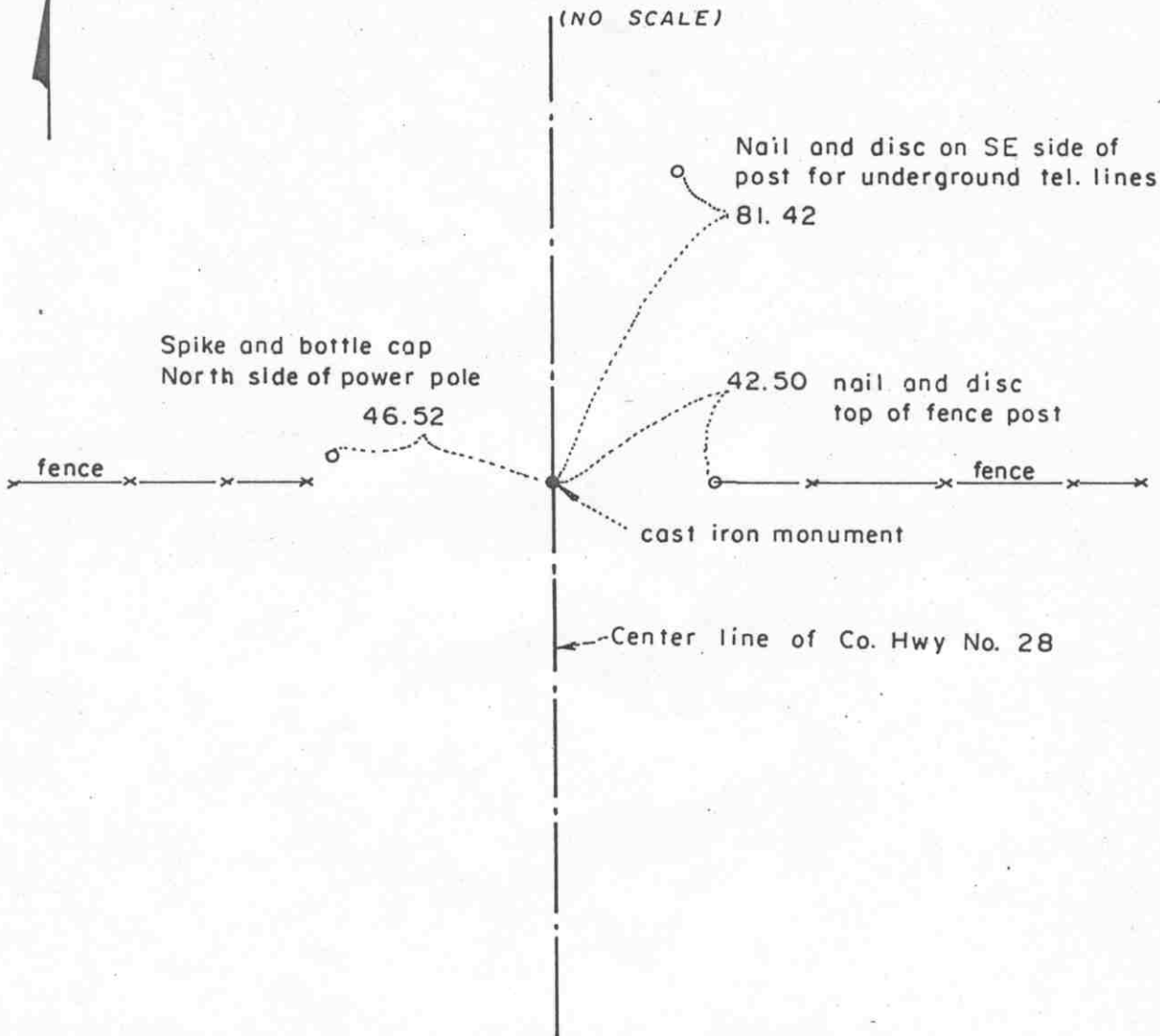
We feel the cast iron monument set by Dickman is in the correct location of the east quarter corner of Section 6.

Certificate of Location of Government Corner



SKETCH OF REFERENCE TIES

(NO SCALE)



Statement of evidence relative to this corner location on sheet 2

I hereby certify that this document was prepared by me or under my direct supervision.

Willard Pellinen
 Willard Pellinen
 McLeod County Surveyor
 License No. 9626

Date July 6, 1988

OFFICE OF THE COUNTY RECORDER
 MCLEOD COUNTY, MINNESOTA.

I hereby certify that this document was filed in this office at 8 o'clock A.M. on the 18th day of October, 1988.

Carmin Ostlie, County Recorder

By _____, Deputy

Document No. 225067

Certificate of Location of Government Corner

This corner was originally established by the Government Land Office in 1855 and was monumented by a wood post. Charcoal was deposited, pits and trench were dug, mound was built around post and osage orange seeds were planted at the corners of the mound as per instructions.

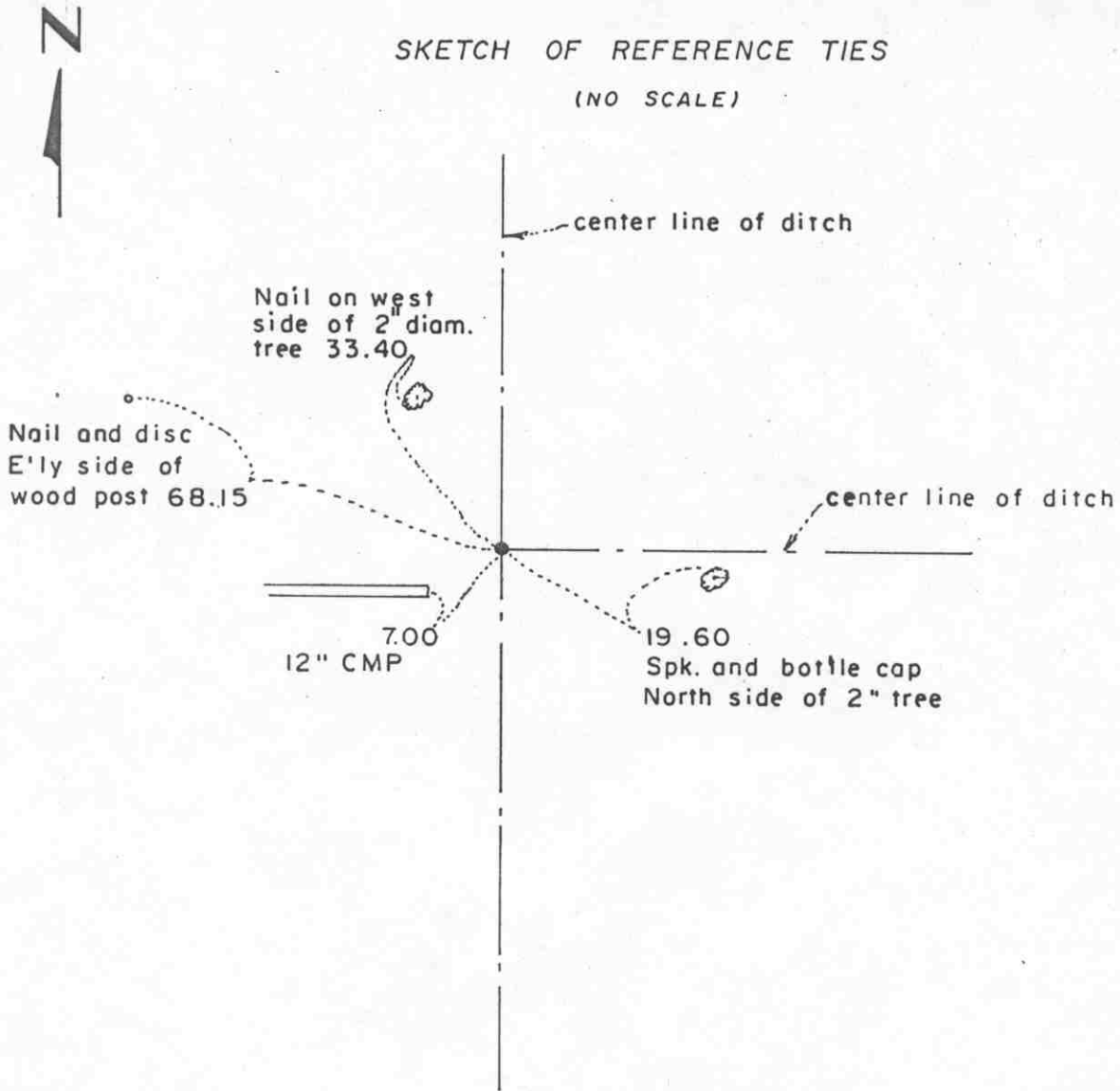
In 1970, McCombs Knutson Associates (Dickman Knutson, County Surveyor) found an iron monument down 3 feet below road surface. This monument was the same type as I.C.Christlieb set at the section corners in 1895 when he resurveyed Collins Township. His notes show a stone at this corner.

In 1975 Knutson set a cast iron monument at the location of the found monument.

We accept the monument set by Knutson as the correct NE corner of section 6, as perpetuated by the monument set by Christlieb.

Certificate of Location of Government Corner

SKETCH OF REFERENCE TIES
(NO SCALE)



Statement of evidence relative to this corner location on sheet 2

I hereby certify that this document was prepared by me or under my direct supervision.

Willard Pellinen
Willard Pellinen
McLeod County Surveyor
License No. 9626

Date July 5, 1988

OFFICE OF THE COUNTY RECORDER
MCLEOD COUNTY, MINNESOTA.

I hereby certify that this document was filed in this office at 8 o'clock A.M. on the 18th day of October, 19 88.

Carmen Ostlie, County Recorder

By _____, Deputy

Document No. 225066

Certificate of Location of Government Corner

This corner was established by the Government Land Office in 1855, and was monumented by a wood post. Pits and trench were dug, a mound was built and osage orange seeds were planted at the corners of the mound.

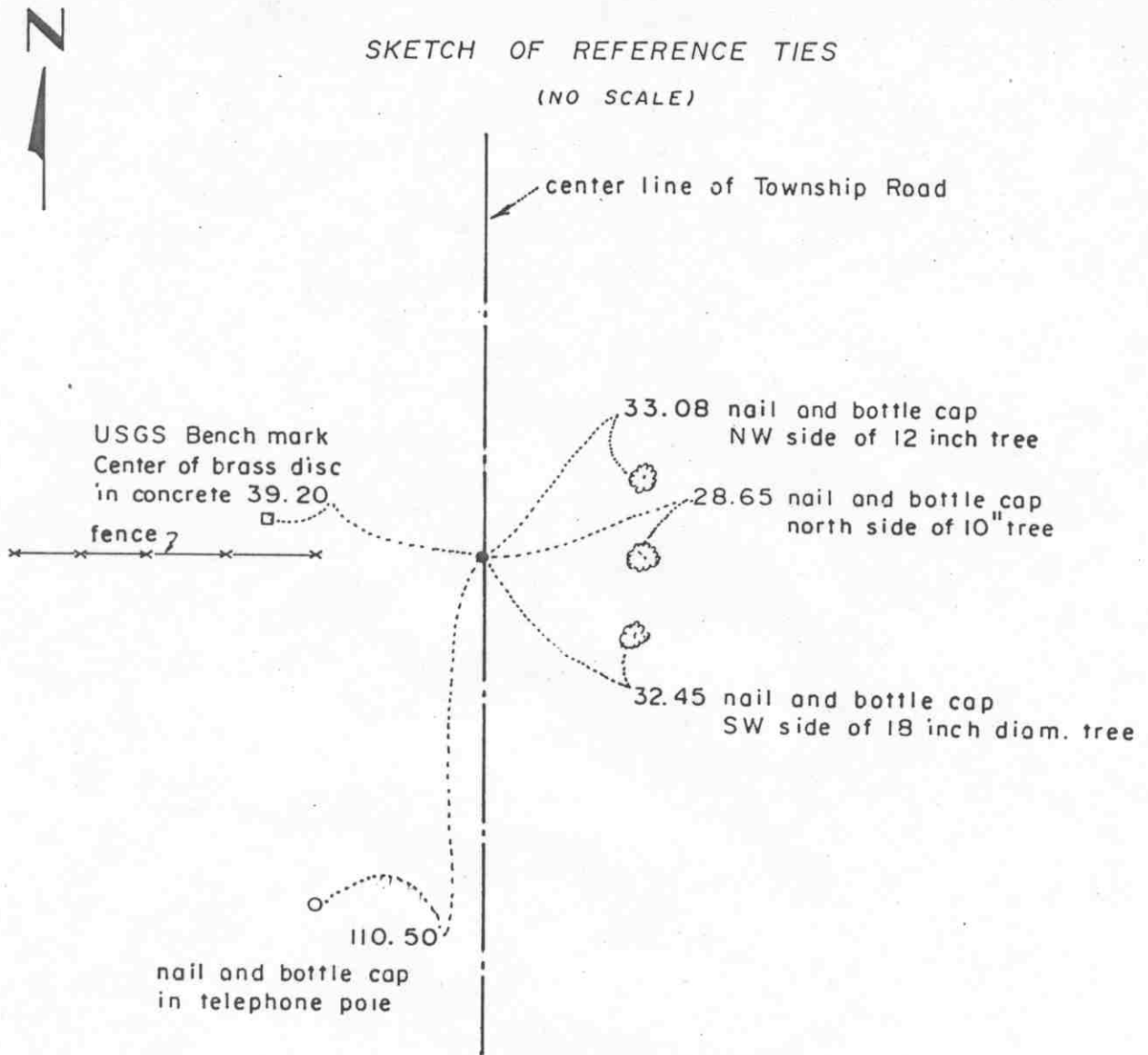
In 1969, McCombs Knutson Associates (Dickman Knutson, County Surveyor) measured the north line of Section 6 and set a temporary north quarter corner at the center line of a ditch running north and south and in line with a fence to the east, as per testimony of the adjacent land owners. This is very nearly on the government proration of the distance between the section corners and also close to being on a straight line between the section corners.

In 1970, MKA set a county cast iron monument at their temporary location.

We accept the corner set by Knutson as the correct location of the quarter corner as perpetuated by the ditch and fence.

Certificate of Location of Government Corner

SKETCH OF REFERENCE TIES
(NO SCALE)



Statement of evidence relative to this corner location on sheet 2

I hereby certify that this document was prepared by me or under my direct supervision.

Willard Pellinen
Willard Pellinen
McLeod County Surveyor
License No. 9626

Date July 5, 1988

OFFICE OF THE COUNTY RECORDER
MCLEOD COUNTY, MINNESOTA.

I hereby certify that this document was filed in this office at 8 o'clock A.M. on the 18th day of October, 19 88.

Carmen Ostlie, County Recorder

By _____, Deputy

Document No. 225064

Certificate of Location of Government Corner

This corner was originally established by John Ryan of the Government Land Office in 1855. He set post, dug pits and trench, built mound and planted osage orange seeds at corners of the mound, as per instructions.

In 1895, I.C.Christlieb resurveyed Collins Township and his notes show a stone at this corner.

In 1925, E.L.Higgins, County surveyor, found a stone at this corner.

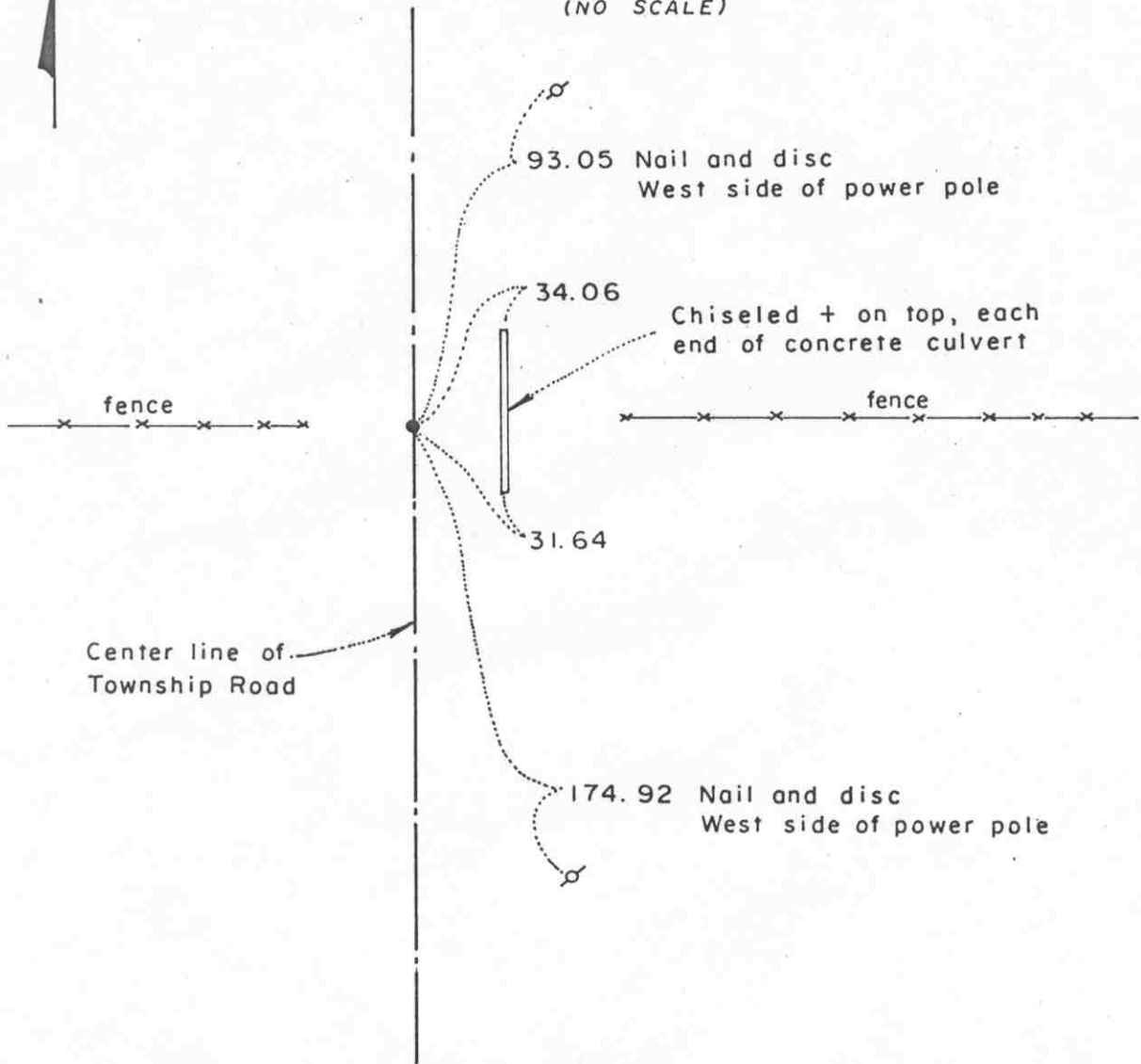
In 1970, McCombs Knutson Associates (Dickman Knutson, County, Surveyor) found a stone and set a County cast iron monument in place of the stone.

We accept the monument set by Knutson as the correct NW corner of Section 6.

Certificate of Location of Government Corner



SKETCH OF REFERENCE TIES
(NO SCALE)



Statement of evidence relative to this corner location on sheet 2

I hereby certify that this document was prepared by me or under my direct supervision.

Willard Pellinen
Willard Pellinen
McLeod County Surveyor
License No. 9626

Date July 1, 1988

OFFICE OF THE COUNTY RECORDER
MCLEOD COUNTY, MINNESOTA.

I hereby certify that this document was filed in this office at 8 o'clock A.M. on the 18th day of October, 1988.

Carmen Ostlie, County Recorder
By _____, Deputy

Document No. 225065

Certificate of Location of Government Corner

This corner was originally established by John Ryan of the Government Land Office in 1855. He set a post, deposited charcoal, dug pits and trench, built a mound and planted osage orange seeds at the corners of the mound.

1895 I.C.Christlieb resurveyed Collins Township and set an iron monument at this corner.

1979 McCombs Knutson Associates found iron monument set by Christlieb in 1895 and set a county cast iron monument over the old monument. Dickman Knutson, County Surveyor.

We accept the cast iron monument as the west quarter corner of Section 6, as perpetuated by the monument set by Christlieb in 1895.